

TOY CLUB NEED GREATER THIS YEAR

You Are Invited to Join Up Now!

With factories operating on part time schedules and unsettled business conditions, there is a greater need this year than last for your help in bringing happiness to the poor kiddies at Christmas time.

Many good persons have responded to the 1937 call for members and if every kind-hearted citizen of Grosse Pointe will do his or her bit, THE TOY CLUB will again be able to live up to its slogan. "Not a Kid Without a Toy for Christmas."

This is the fifth year THE TOY CLUB has done noble work in providing joy for poor children and in keeping with the policy instituted when the little Club was first organized, not one bit of publicity is given to any person in connection with this good work.

Here are several more letters THE TOY CLUB received last year:

This from a Grosse Pointe charitable church organization: "Please accept the sincere thanks of \_\_\_\_\_ for the many toys the Toy Club sent this Christmas to the children in the families under



"FORGOTTEN"

our care. We do not need to tell you that your slogan, "Not a Kid Without a Toy for Christmas," was most certainly fulfilled.

And this one is from an orphanage in Detroit:

"Just a few lines to express appreciation of your tender loving thought and to tell you of the happiness your kind remembrance brought to our little charges.

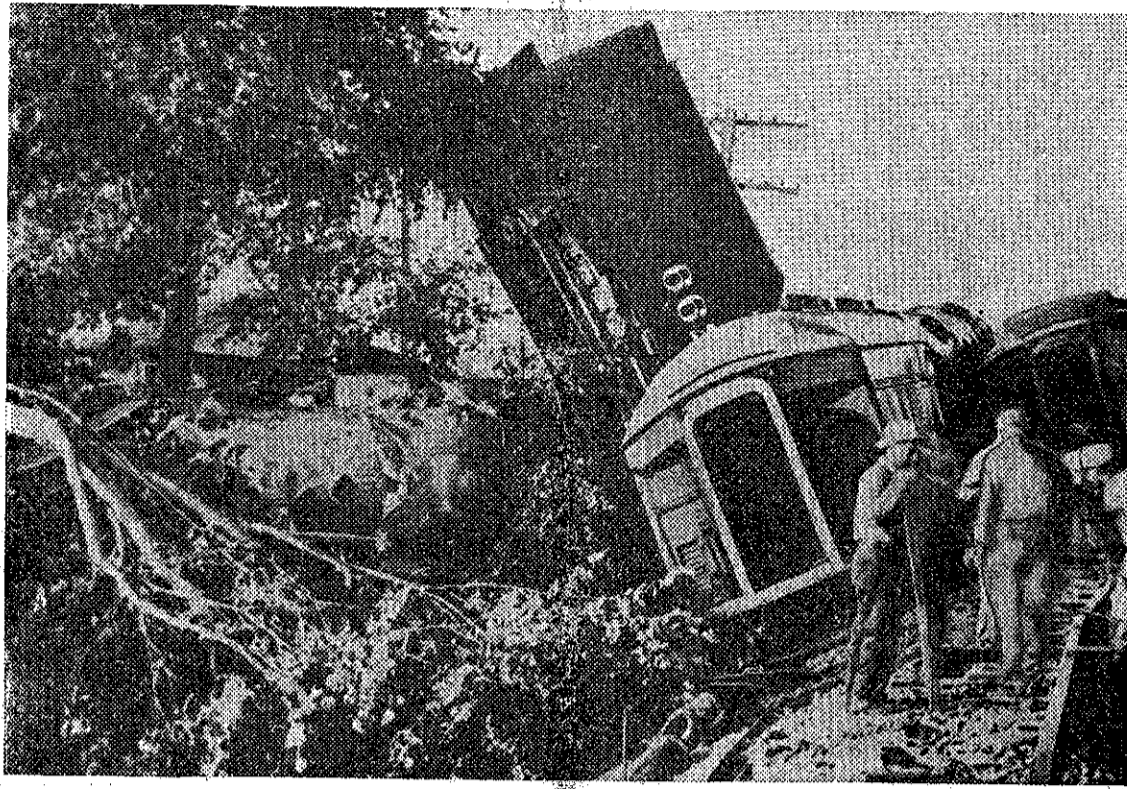
"Wishing to you and all many prosperous Happy New Years, Very gratefully yours."

Join in this cheerful, happy charitable Christmas work. You can obtain a membership application at any police and fire department in Grosse Pointe Township, or if more convenient, use the coupon printed below.

"Not a Kid Without a Toy for Christmas"

Form with fields for Name, Address, Amount Enclosed, and a paragraph of text for the coupon.

One Killed, 12 Hurt in Railroad Wreck



New Haven, Ind.—The engineer was killed and a dozen other persons injured as this passenger train, bound from Detroit to St. Louis, plunged from the tracks.

Goodfellows To Sell Papers on Grosse Pointe Streets Tuesday Dec. 21

Paper Mister, Paper Mister? That will be the familiar cry you will hear Tuesday morning, December, 21 as the Grosse Pointe Lions Club, some 60 strong, and ably assisted by the police and firemen of the Grosse Pointe municipalities sell papers in Grosse Pointe.

Each year since its organization in 1929, at approximately this time of the year the Grosse Pointe Lions Club has, through its members and the co-operation of the police and fire department personnel, staged a paper sale.

Times in the past you have been solicited to contribute, and you have responded each time to the total aggregate of approximately \$3,000 each year, and this year above all, when the purposes which these contributions serve, will be in greater number than before, the Grosse Pointe Lions Club asks you to be more liberal than ever before in your contribution.

We ask you to bear in mind that every penny contributed by you to this Goodfellow Fund is used for charitable purposes for the quick relief of distress, and that nothing is used for overhead or incidental expenses to distribution, investigation, etc.

The Neighborhood Club as a center of distribution is supplemented by a member of the Lions Club resident in the Village of Grosse Pointe Park, City of Grosse Pointe, Grosse Pointe Farms, Lochmoor and Grosse Pointe Shores who will see that any case of emergency will be afforded immediate relief.

The Grosse Pointe Neighborhood Club disburses the funds to aid the needy as the emergency arises. The Grosse Pointe Lions urged that you aid them in this noble enterprise by buying a Goodfellow Paper. It may mean a bottle of milk for some needy child, or shoes for some destitute family, or glasses for some child whose parents may be poverty-stricken.

There are many such cases in Grosse Pointe during the year, and we as good citizens should do our bit to aid these unfortunate individuals who require this assistance.

Every man and woman should freely give on this occasion with the feeling that it will aid some fellowman, so let us watch for the Goodfellow newsboys Tuesday, December 21, and offer our contribution with a smile. You will find them on all main thoroughfares of Grosse Pointe.

A & P New Super Market Opens Friday

A&P's Grosse Pointe store at 17045 Kercheval near St. Clair, which has been closed for remodeling and redecorating, opens today as the latest of A&P's Super Markets.

The new price policy at 17045 Kercheval is one that has proved popular and successful in other Michigan A&P Super Markets, and is based on "Everyday Low Prices," and the elimination of specials.

Hundreds of prices have been reduced to new low levels and these prices will be available every day in the week according to Mr. O. Hahn, Supervisor. Prices will change only as markets fluctuate.

The widest possible variety of merchandise is stocked, all backed by A&P's seventy-nine-year-old reputation as the Nation's leading food merchant.

A&P's opening ad appears on Page five.

Defer PTA Meeting Friday, December 17

The December meeting of Defer P. T. A. has been changed to Friday, December 17.

There will be a Christmas play by the children.

All in the community are welcome, whether members or not.

For further details see your Grosse Pointe Review next week.

Police and Firemen's Pension Petitions Being Circulated

A petition is being circulated relative to amending the Charter of Grosse Pointe Park, providing for a Firemen and Policemen Retirement and Pension Fund, to be voted on February 14, 1938.

Icy Walks Delay Mail Distribution

It will aid materially in the distribution of mail if sidewalks are kept free of ice and snow as much as possible.

Huge Sale at A. J. Forsters

A huge sale is in progress at the A. J. Forster stores, one at 14400 Charlevoix avenue and the other at 13928 East Jefferson avenue.

Music Festival Planned for December 18

The semi-annual music festival under the direction of Mr. John Finch, music instructor, will be held Saturday, Dec. 18, at 8:15, o'clock in the Grosse Pointe High School auditorium.

Yanks Leave "While Leaving's Good"



Shanghai.—Americans are fleeing Shanghai as Sino-Japanese war terrors mount. This is a scene on Shanghai customs jetty as 350 American women and children were about to board a tender to take them to the liner President Jefferson, Manila bound following evacuation orders.

Three Overcome by Smoke Sunday

A fire broke out at 992 Nottingham road Sunday night, causing some damage to the front of the house and its occupants, Mr. and Mrs. Glen and their daughter Mary, age nine, were overcome by the smoke.

Gas Heat Easy to Regulate

With the easy regulation of heat that is possible with the modern gas ranges, there's a point or two about boiling food faster by boiling wate, so turn serving.

Select Your Gifts at Pongraz Jewelers

This season Edw. J. Pongraz, Jr. has a complete line of Elgin, Gruen and Hamilton watches picked with an eye to beauty and also a thought to mechanical precision that will answer your gift problem.

Mayfair Preparing for New Year's Eve Party

If you wish to be in on the big New Year's Eve celebration at the Mayfair, Mack at the Seven Mile road, it is advisable to make your reservations at an early date to assure choice of location, but in the meantime don't overlook their big auction party held every Thursday evening.

Announcing Opening of A&W Market

The A&W Economy Market at 14125 Essex avenue, opened about a week ago and it is their aim to maintain a delivery service for the convenience of the residents of this area who desire fine fruits, vegetables, and leading brands of staple groceries.

Values in Automobiles

The Packard Grosse Pointe Branch on East Jefferson at Kercheval have a number of splendid values in used cars, some of them officials' cars that look and run like new.

REVIEW LINERS GET RESULTS







**IT'S  
HERE**

**The New A&P SUPER MARKET**

**17045 KERCHEVAL AVE.**  
AT ST. CLAIR FREE PARKING

STORE HOURS:  
8:00 a. m. to 6:00 p. m. daily  
8:00 a. m. to 9:00 p. m. Sat.



*Your dollar will go further at these amazingly low every-day prices on all foods!*

FOOD STORES

**Open Friday**

Completely Remodeled, Redecorated, and Altered for

**SELF-SERVICE**

Wide aisles, handy basket carriers . . . All prices plainly marked . . . everything to make your shopping a convenience and an economy.

We Now Offer You The Lowest Average Prices in Michigan

No frills, superfluous innovations or unnecessary expense is added to the price you pay. Our self-service operation and other economies have made it possible for us to offer you rock-bottom prices on EVERY ITEM IN THE STORE . . . and you have a wide selection . . . more than 2000 . . . all backed by A&P's 79-year reputation as the nation's leading food merchant.

**More for Your Dollar**

We offer you no "baits" . . . no premiums . . . no "come ons." "Specials" have been eliminated. In fact compared to the usual specials you can call ALL our prices SPECIALS EVERY DAY in the week. A&P prices are down to stay down and your shopping is just as economical on Monday as it is on Saturday. We invite you to compare our prices. We guarantee you that you will save on your entire food bill.

**COME IN AND SEE FOR YOURSELF**

*Farm Fresh*

and priced low every day in the week

- CALIFORNIA NAVEL
- Oranges** med. size doz. **12c**
- Fresh Peas** FULL PODS lb. **10c**
- Oranges** Juicy Florida Large size 2 doz. **45c**
- Mushrooms** 1-lb. ctn. **27c**
- Grapefruit** Texas Seedless Jumbo Size ea. **5c**
- Brussel Sprouts** quart **15c**
- Broccoli** Original bunch 2 for. **25c**
- Potatoes** U. S. No. 1 Green Mountain 14 1/2-lb. bag **25c**
- Head Lettuce** large head **5c**
- Bananas** 4 lbs. **19c**
- Tangerines** Sweet Juicy Extra large doz. **19c**
- Cucumbers** Fancy Outdoor ea. **5c**
- Apples** Michigan Jonathans 6 lbs. **19c**
- Baking Potatoes** 10-lb. cloth bag **23c**
- Potatoes** Michigan U. S. No. 1 2 pecks **37c**
- Cauliflower** 2 heads **25c**
- Emperor Grapes** 3 lbs. **17c**

*Meats of Guaranteed Quality*

And A&P Meat Prices are Low Every Day in the Week—Changing Only with Markets!

<b>FRESH HAM</b> Roast, Young Pig Pork Whole or Shank Half lb. <b>19c</b>	<b>LEG of LAMB</b> Genuine Spring lb. <b>25c</b>	<b>SLICED BACON</b> Swift's Prem., Armour's Star 1/2-lb. pkg. <b>15c</b>	<b>RIB ROAST</b> Standing . . . Branded Steer Beef lb. <b>25c</b>
---	--	--	---

<b>Sirloin Steak</b> Branded Beef lb. <b>29c</b>	<b>Beef Roast</b> Best Chuck Cuts Branded Beef lb. <b>19c</b>	<b>Rolled Rib Roast</b> Branded Beef lb. <b>29c</b>	<b>Swiss Steak</b> No Bone Branded Beef lb. <b>25c</b>
<b>Pork Tenderloin Roast</b> lb. <b>23c</b>	<b>Pea Meal Bacon</b> lb. <b>35c</b>	<b>Lamb Chops</b> lean, meaty lb. <b>25c</b>	<b>Pork Chops</b> First Cuts lb. <b>19c</b>
<b>Smoked Hams</b> Ar. Star, Swift's Prem. Whole or string half lb. <b>25c</b>	<b>Breakfast Sausage</b> Armour's Star lb. <b>25c</b>	<b>Calves Liver</b> or Sweet Breads lb. <b>43c</b>	<b>Fancy Turkeys</b> Fresh Dressed lb. <b>29c</b>
<b>Ducklings</b> Genuine Long Island lb. <b>23c</b>	<b>Haddock Fillets</b> 2 lbs. <b>29c</b>	<b>Oysters</b> Fancy Norfolk pt. <b>23c</b>	<b>Swordfish</b> lb. <b>35c</b>
<b>Whitefish</b> lb. <b>33c</b>	<b>Scallops</b> lb. <b>35c</b>	<b>Trout</b> lb. <b>33c</b>	<b>Shrimp</b> lb. <b>25c</b>
	<b>Perch</b> lb. <b>17c</b>		<b>Fillet of Sole</b> lb. <b>27c</b>

*Hundreds of Prices Reduced!*

These are Just a Few of the Hundreds of Values in Store for You at 17045 Kercheval Ave.

<b>COFFEE</b> lb. 16c 3 lb. bag <b>45c</b>	<b>POPULAR BRAND CIGARETTES</b> ctn. <b>\$1.15</b>	<b>DEL MAIZ NIBLETS</b> 2 cans <b>23c</b>
<b>IONA PEAS, CORN</b> 4 med. cans 29c	<b>GOLD DUST, large size</b> 2 pkgs. 33c	<b>CLIMALENE</b> 2 small 15c; large 19c
<b>GOLDEN BANTAM CORN</b> 3 med. cans 25c	<b>SILVER DUST</b> large pkg. 19c	<b>20 MULE TEAM BORAX</b> pkg. 15c
<b>DEL MAIZ CORN</b> 3 med. cans 29c	<b>SUPER SUDS, red package</b> 2 for 33c	<b>CHLORIDE OF LIME</b> 2 cans 25c
<b>CAMPBELL'S TOMATO SOUP</b> 4 cans 25c	<b>SUPER SUDS, Concentrated</b> 2 pkgs. 35c	<b>BABBITT'S LYE</b> can 10c
<b>RELIABLE PEAS</b> 2 med. cans 27c	<b>SOAP CHIPS</b> 5-lb. pkg. 28c	<b>BAB-O CLEANER</b> can 11c
<b>IONA TOMATOES</b> large can 10c	<b>LUX FLAKES</b> large pkg. 21c	<b>BABBITT'S CLEANSER</b> 3 cans 10c
<b>TINY KERNEL CORN, Del Monte</b> 2 med. cans 25c	<b>CHIPSO, RINSO, OXYDOL</b> 2 pkgs. 35c	<b>BRILLO CLEANER</b> 2 pkgs. 15c
<b>DEL MONTE TOMATOES</b> 2 med. cans 25c	<b>FELS NAPHTHA SOAP</b> 6 bars 29c	<b>CLOROX, small 13c</b> qt. bot. 23c
<b>DRY SOAKED PEAS</b> 3 med. cans 17c	<b>AJAX LAUNDRY SOAP</b> 10 bars 29c	<b>GOLD DUST SCOURING POWDER</b> 4 cans 19c
<b>TOMATO PUREE</b> can 5c	<b>WERK'S TAG SOAP</b> bar 5c	<b>KITCHEN KLENZER</b> can 5c
<b>ASPARAGUS THANK U</b> 2 cans 31c	<b>P&amp;G SOAP, KIRK'S FLAKE</b> 6 bars 25c	<b>SUNBRITE CLEANSER</b> can 4c
<b>A&amp;P SUCCOTASH</b> 2 med. cans 25c	<b>FAIRY SOAP</b> cake 4c	<b>S. O. S. CLEANER</b> 2 pkgs. 25c
<b>DEL MONTE SPINACH</b> 2 med. cans 27c	<b>PALMOLIVE, CAMAY SOAP</b> 4 cakes 21c	<b>WYANDOTTE CLEANSER</b> 2 cans 15c
<b>IONA CUT BEETS</b> 3 med. cans 25c	<b>LUX TOILET SOAP</b> 4 cakes 23c	<b>BO PEEP AMMONIA</b> qt. bot. 19c
<b>DICED CARROTS</b> 3 med. cans 25c	<b>LIFEBUOY SOAP</b> 3 cakes 17c	<b>LITTLE BOY BLUING</b> bot. 9c
<b>LARSEN'S VEG-ALL</b> 2 med. cans 23c	<b>KIRK'S CASTILE SOAP</b> 4 cakes 17c	<b>CHORE GIRL</b> pkg. 9c
<b>IONA HOMINY</b> 3 large cans 25c	<b>IVORY SOAP, large</b> 2 cakes 19c	<b>CANVAS GLOVES</b> pair 10c
<b>A&amp;P SAUERKRAUT</b> 2 large cans 15c	<b>IVORY SOAP, medium</b> 3 cakes 17c	<b>MOPS, each 21c; HANDLES</b> each 10c
<b>CAMPBELL'S BEANS</b> 2 giant cans 19c	<b>LAVA SOAP</b> 3 cakes 17c	<b>SAL SODA</b> pkg. 5c
<b>WEBSTER LIMA BEANS</b> 3 med. cans 25c	<b>WHIZ HAND SOAP</b> 3 cans 25c	<b>CLOTHES LINES</b> each 19c
<b>IONA STRING BEANS</b> 4 med. cans 29c	<b>SWEETHEART SOAP</b> 4 cakes 21c	<b>CLOTHES PINS</b> pkg. 5c
<b>WHEATIES</b> pkg. <b>10c</b>	<b>BREAD</b> A&P Jumbo Loaf 3 for <b>25c</b>	<b>Crisco, Spry</b> 3 lb. can <b>49c</b>
<b>IONA FLOUR</b> 24 1/2-lb. bag 63c	<b>A&amp;P FRUIT COCKTAIL</b> 2 cans 25c	<b>OLEOMARGARINE</b> lb. 10c
<b>PILLSBURY FLOUR</b> 24 1/2-lb. bag 93c	<b>DEL MONTE PEACHES</b> 2 large cans 35c	<b>WHITEHOUSE EVAP. MILK</b> 3 tall cans 19c
<b>VELVET FLOUR</b> 5-lb. bag 29c	<b>IONA PEACHES</b> 2 large cans 31c	<b>PET, CARNATION MILK</b> 3 tall cans 20c
<b>SOFTSILK CAKE FLOUR</b> pkg. 25c	<b>IONA PEARS</b> 2 large cans 29c	<b>CONDOR COFFEE</b> 2 lbs. 47c
<b>SNO-SHEEN CAKE FLOUR</b> pkg. 23c	<b>APRICOTS, No. 1 tall</b> 2 cans 21c	<b>RED CIRCLE COFFEE</b> 2 lbs. 39c
<b>DUFF'S CAKE MIXES</b> pkg. 23c	<b>DEL MONTE CHERRIES R. A.</b> med. can 25c	<b>BOKAR COFFEE</b> 2 lbs. 43c
<b>SWANSDOWN CAKE FLOUR</b> pkg. 23c	<b>CHEERRIES, Red Sour</b> 2 med. cans 25c	<b>CONFECTIONER'S SUGAR</b> 3 1-lb. pkgs. 22c
<b>PANCAKE FLOUR, SUNNYFIELD</b> 2 pkgs. 15c	<b>APPLE SAUCE</b> 4 med. cans 25c	<b>MICHIGAN BEET SUGAR</b> 25-lb. bag \$1.33
<b>HENKEL'S PANCAKE FLOUR</b> pkg. 8c	<b>A&amp;P PLUMS</b> 2 large cans 29c	<b>ROLLED OATS</b> 5-lb. bag 19c
<b>PANCAKE FLOUR, Chief Pontiac</b> 5-lb. bag 19c	<b>SLICED PINEAPPLE</b> 2 flat cans 19c	<b>SHREDDED WHEAT</b> 2 pkgs. 23c
<b>PANCAKE FLOUR, Aunt Jemima</b> pkg. 10c	<b>DOLE PINEAPPLE GEMS</b> large can 23c	<b>CORN FLAKES, Sunnyfield</b> 2 large pkgs. 17c
<b>SUNNYFIELD FLOUR</b> 5-lb. bag 15c	<b>MARASCHINO CHERRIES, 3-oz.</b> 2 botts. 15c	<b>DEL MONTE COFFEE</b> 2 lbs. 49c
<b>CALUMET BAKING POWDER</b> 1-lb. can 21c	<b>GRAPEFRUIT JUICE</b> 2 med. cans 23c	<b>CLEANSING TISSUE, 200 sheets</b> 3 boxes 25c
<b>RUMFORD BAKING POWDER</b> 12-oz. can 21c	<b>SUN RAY TOMATO JUICE</b> No. 5 can 21c	<b>PAPER TOWELS</b> 3 rolls 25c
<b>ROYAL BAKING POWDER</b> 12-oz. can 35c	<b>TOMATO JUICE</b> Giant 50-oz. can 17c	<b>WALDORF TISSUE</b> 4 rolls 15c
<b>K. C. BAKING POWDER</b> 25-oz. can 21c	<b>SAUERKRAUT JUICE</b> 3 med. cans 29c	<b>NORTHERN TISSUE</b> 4 rolls 19c
<b>CLABBER GIRL BAKING PDR.</b> 2-lb. can 23c	<b>TREESWEET ORANGE JUICE</b> 2 cans 25c	<b>DIAMOND CRYSTAL SALT</b> 2 pkgs. 13c
<b>HERSHEY'S CHOCOLATE</b> 8-oz. 10c	<b>TREESWEET LEMON JUICE</b> 2 cans 25c	<b>IONA PLAIN OLIVES, 4 1/4-oz.</b> 2 botts. 21c
<b>BAKER'S CHOCOLATE</b> 8-oz. 17c	<b>SUNSWEEP PRUNE JUICE</b> 4 cans 29c	<b>PURE PRESERVES, Ann Page</b> 2-lb. jar 38c
<b>IMIT. VANILLA EXTRACT</b> pt. bot. 19c	<b>PINEAPPLE JUICE</b> Giant 46-oz. can 29c	<b>JELL-O ROYAL GELATIN</b> 4 pkgs. 18c
<b>RAISINS CELLO WRAP</b> 4-lb. pkg. 31c	<b>HEINZ TOMATO JUICE</b> 4 cans 29c	<b>SALADA TEA, Blue Label Black</b> 1/2-lb. pkg. 35c
<b>BUTTER</b> Fresh roll 2 lbs. <b>75c</b>	<b>EGGS</b> Everyone Guaranteed 2 doz. <b>43c</b>	<b>KETCHUP</b> 3 large botts. <b>25c</b>

**"EVERY-DAY LOW PRICES"**

### Neighborhood Club Activities

The Neighborhood Club is planning a big Christmas party for Saturday night, December 18, at 7:30 p. m. Everybody welcome. Program, free movies, and fun galore. Santa Claus will also be there, so let's have everybody out.

Notice! Tap dancing classes have been changed from Wednesday nights to Thursday afternoons at 4 o'clock. There will be no more social dancing classes at the Club on Wednesday evenings.

**See LANPHAR & CO. FOR MORTGAGES**

INTEREST RATES AS LOW AS **4 1/2%** UP TO 20 YEARS TO REPAY  
Phone Cadillac D466  
1010 LAFAYETTE BLDG.

**CALENDAR OF EVENTS**  
Monday, December 13 — Rotarian luncheon. National Association of Gardeners meeting.  
Tuesday, December 14 — Visiting Nurses Association luncheon.  
Wednesday, December 15 — Grosse Pointe Medical Association luncheon.  
Thursday, December 16 — Grosse Pointe Badminton Club luncheon.  
Friday, December 17—V. V. V. Girls Christmas party.  
Saturday, December 18—Children's Christmas party.

### Jefferson Avenue Baptist Church

"Let Christmas Come," and "Life is Precious" are the sermon subjects for the worship services this Sunday at the Jefferson Avenue Baptist Church, the Rev. Wayland Zwyer, minister, preaching both at 11 a. m. and 7:30 p. m. services. If you are without a church home in this vicinity Jefferson Baptist cordially invites you to these services, looking toward Christmas. The Church School of eight departments meets at 9:45 a. m., with a second session for the younger departments during the hour of morning worship. Friendly and Judson B. Y. P. U.'s meet at 6:15 and the new high school youth group meets at 6:30 p. m., John Engstrom, counselor.

**Parties Will Be Held at Post Headquarters During December**  
By LEO M. WEIL  
Parties will be held every Tuesday night in December at Post 303 headquarters, Mack at Neff road. The public is cordially invited. Our initiation party held December 1 was very successful. Thanks to Comrade Leo Harrison.

**We Grow With You. Why not Grow With Us? Advertise in The Review.**

**Cooper Bros. Funeral Directors**  
10400 MACK AVENUE  
**Lenox 5885**  
Residence—1305 Buckingham  
TU 2-1717

### Parties Will Be Held at Post Headquarters During December

Upon returning to the class room, Mr. Jackson gives the students the accurate measurement, and the students compare the correct measurement with their estimation, figuring out their error and the per cent of error. They are marked on the accuracy of their estimation.

"We do this to make the students appreciate the value of being careful in making measurements," stated Mr. Jackson. He added that actually going through this process of estimation gives the students experience in making measurements, such as people make in estimating the size of a house or lot.

The Student Association to be held in the boys' gym this Friday will start at 8:30 o'clock since the committees are allowing 30 minutes for the stage show and three hours for dancing. Master of ceremonies for the floor show will be Stewart Smith. Allen Cooke will impersonate prominent characters including Joe Penner, Ed Wynn, Fred Allen, and Charlie McCarthy.

Betty Alexander, that great harmonica player, will swing a selection or two. Dick Hunter and Catherine Smith, 9B students, will do a special tap dancing feature.

A torch song or two will be crooned by Monica Lauer, and the "Jazz Jazzy Jazz" band consisting of Bob Smith, Jack Newhall, and Bob Little will do the accompanying as well as play a few specialty numbers. Coca-cola and orangeade will be served as refreshments. Waiters and waitresses, dressed in the French cafe style, will take the orders. Tables will outline the gym, and girls will parade about selling candy. Orders must be paid for in advance.

### Conference Seen as Aid to Students

Representatives of over 70 high schools and preparatory academies were in Ann Arbor today, consulting with former students, now freshmen in the University of Michigan, in a plan sponsored by the Registrar of the University which is intended to bring about a closer relationship between the high school and the University. Approximately 700 freshmen students visited their former high school principals and teachers to talk over their orientation problems in personal conferences.

Don't forget, your dues are due (give the Commander a Christmas present of 125 members).

### Fort Pontchartrain

Members and guests of Fort Pontchartrain Chapter, Daughters of the American Revolution, will attend a luncheon at 12:15 o'clock Friday, December 17, in the Ivory Room, Hotel Statler, to be followed by a meeting at 1:30 o'clock, which the regent, Mrs. William F. Cathin, will conduct. A Christmas program with special music will be featured. In the business session, there will be a special election for the office of second vice regent, left vacant by the resignation of Mrs. Warren Ross Carlin, who has moved to Warren, Pa.

Dr. Roy Ewing Vale, as speaker of the day, will bring the Christmas message. Central High school choir, directed by Harry W. Seitz, their instructor, will present a program of Christmas carols. Mrs. H. E. Burleigh will give a musical reading, "A Mansion," by Henry Van Dyke, with musical accompaniment by Mrs. L. D. Fisher.

### Grosse Pointe High School Notes

To develop accuracy in estimating, the measurement of distances, math classes under the direction of Mr. Humphrey Jackson, mathematics instructor, have been going out into the yard to do some actual measurement.

The classes are divided up into committee, containing seven or eight pupils. A captain is chosen to head each separate committee, and he is responsible for the activities of his particular group. The groups make their estimations of objects on the school grounds.

First, the students measure their pace, or walking step. Then when they have the length of their pace, they estimate the distance of some designated place, such as the distance between the flag pole, the distance between the outer and inner sidewalks, the distance between the two front entrances, and the distance between designated lamp posts.

### New England Women

Detroit Colony, National Society, New England Women, will have a Christmas luncheon Wednesday, December 15, at 12 o'clock, at Moinet's Dining Room, Cass avenue at Merrick. The meeting, at 1:30 o'clock, will be held, however, in the auditorium on the third floor of the Main Library, Woodward avenue at Kirby, with the president, Mrs. W. Scott Hobbs, presiding. Ruth Hoey, of the Library staff, will tell a Christmas story. Members are

requested to answer the roll call with Scripture passages appropriate to the season, and to bring inexpensive gifts for a Christmas gift exchange. Luncheon reservations may be made with the corresponding secretary, Mrs. John Hutton, of Normandie avenue.

Sales tax dodgers find a deputy who is placed on their payroll to collect or see that the sales tax is collected and paid to the State. Auto dealers are next on the list.

**ADVERTISE IN THE REVIEW**

**FINEST MICHIGAN BALSAM AND SPRUCE**  
All fresh, late cut, from 2 to 18 ft.  
A Reliable Tree Dealer Guaranteed Michigan's Best  
LOOK BEFORE YOU BUY  
**Stephen H. VanTiem**  
Corner St. Clair and Kercheval City of Grosse Pointe

**At Your Service DAY and NIGHT**  
PORTRAITS BY PHOTOGRAPHY THAT PLEASE  
**The Warren Studio**  
16711 E. Warren at Yorkshire Road  
Phone Tuxedo 2-2540

**For Sale**  
CHAMPIONSHIP SPRINGER SPANIEL PUPPIES  
MR. and MRS. L. C. GOULD  
5248 Harvard Road

**FOR HER**  
Gifts That Last  
You know your gift will be treasured . . . and for a lifetime . . . if you give jewelry. And you know, too, it will be received with something akin to awe if you select it at Forsters.

**DIAMONDS**  
You make a wise investment in choosing diamonds now and diamonds at Forsters are diamonds with a reputation that inspires confidence in reliability and value.

**WATCHES**  
The perfect gift for Her or Him. You'll be fascinated by our large assortment of elegant timepieces, priced upward from

**\$19.50**

**A. J. FORSTER**  
2 STORES TO SERVE YOU  
Jeweler - Optometrist - Optician  
Repairs on Glasses While You Wait  
13928 E. Jefferson Lenox 5548  
14400 Charlevoix Lenox 5376

**PRE-CHRISTMAS SALE**

**KROGER VALUES GOLD MEDAL PILLSBURY'S FLOURS OF QUALITY**

YOUR CHOICE 2 1/2-LB. SACK **93c** 5 lb. sack **29c**  
MIXING BOWL WITH VELVET 5 lb. sack **89c**  
HENKEL'S BEST FLOUR 2 1/2-LB. SACK **79c**  
AVO. SALE FLOUR 2 1/2-LB. SACK **89c**  
COUNTRY CLUB FLOUR 2 1/2-LB. SACK **89c**

**DID YOU? SEE THE BEAUTIFUL LADY DORIS SILVERWARE ON DISPLAY AT YOUR KROGER STORE—GET DETAILS FROM MANAGER.**

**A \$2.00 VALUE FOR 65c**

**COFFEE** HOT-DATED FRENCH 2 lbs. **45c**  
BEECHNUT **29c**  
**COFFEE** lb. **29c**  
**KETCHUP** HEINZ PURE 2 large **35c**  
ASSORTED KINDS lb. **10c**  
**COOKIES** lb. **10c**  
**BREAD** CLOCK WHEAT 2 loaves **19c**  
**IVORY SOAP** 2 large **19c**  
**PUMPKIN** COUNTRY CLUB 3 No. 2 1/2 cans **25c**

**Tomato Juice** 3 tall cans **25c**  
**Cigarettes** plus Tax carton **\$1.13**  
**Maxwell House** lb. can **27c**  
**Roll Butter** 1/4-lb. prints, lb. 40c lb. roll **39c**

**SWIFT'S PREMIUM HAM** WHOLE or SHANK lb. **27c** HALF  
Every one loves good ham and here's HAM at its best—smoked to the point of excellent flavor and priced so low it's a real value—only at Krogers.

**Chuck Roast** lb. **23c** MELROSE, SLICED 1/2-lb. pkg. **19c**  
**Rib Roast** lb. **31c** FANCY TASTYLOIN lb. **33c**  
**Wieners** lb. **29c** FANCY Leg O'Lamb lb. **29c**

**RED GRAPES** lb. **5c**  
**ORANGES** Extra large doz. **35c**  
**SPROUTS** lb. **10c** FANCY MAINE POTATOES bag **29c**  
**Cauliflower** (Sat. only) head **9c** TEXAS SEEDLESS Grapefruit Med. lge. size 4 for **15c**  
**Mushrooms** pint **15c** CRISP, ICEBERG LETTUCE head **7c**  
**Cranberries** lb. **10c** WASHINGTON BOXED, DELICIOUS Apples "A treat to eat" 4 lbs. **25c**

**KROGER STORES**

16117 Mack Avenue  
15222 E. Jefferson Ave.  
15229 Kercheval Avenue

344 Rivard Blvd.  
17215 Mack Avenue

FREE DELIVERY  
17037 Kercheval Ave.  
Phone NI: 6590-6501