

Shores Will Stage Big Defense Review

Location of Village Revealed in Fact That 250 Out of Population of 800 Have Enrolled in Various Branches

(Continued from Page 1)

Units and also representatives of the Blood Donor's Service. First Aid demonstrations will be supervised by Mrs. Frank Morsh, who has been conducting first aid classes for the Village.

To date more than 174 women of the village have completed the Red Cross training courses in



Storm Sash For Steel Windows

There's a SEASON-SEAL Combination Screen and Storm Sash For Every Window

FROM BASEMENT TO ATTIC

H. A. Terms, with up to 12 Months to Pay

No Priorities Yet in Effect

SQUIER

SCREEN COMPANY

116 HURLBUT PLAZA 8710 DETROIT

STORM DOORS AND SASH SAVE FUEL!

WHY NOT INSULATE Your Home Now?

Ask your neighbor who has insulated! He has the proof!

Kimsul 4 1/2 sq. ft.

Rock Wool 80¢ bag

SALE !!

LAWN FURNITURE

Rustic Table . . . \$19.50

Rustic Chair . . . \$5.25

Lumber POWERS Supplies

1743 Harper, bet. 7 & 8 Mile Rds. Tuxedo 2-4820

EVERYTHING FOR THE BUILDER

Autumn Foods FOR HEALTHY APPETITES

FINE GROCERIES

Flour 5-lb. bag 29c

Orange Juice 46-oz. can 29c

Light Meat per can 32c

Tissue 4 rolls 21c

New Pack Tomatoes 2 No. 2 cans 23c

Ball Quort Fruit Jars Dozen 65c

Pint Fruit Jars Dozen 55c

Heart Soap 4 Bar 11c deall 21c

Corn Flakes 11-oz. pkg. 9c

Showering No. 3 can 65c

Whole Kernel Corn 2 No. 2 cans 27c

Fruits & Vegetables

"Top of the Harvest"

Supersuds Lge. 22c

Supersuds Small 10c

Kiwi Lge. 21c

Malmolive Soap 3 bars 20c

Hi-No Crackers lb. pkg. 19c

Kitchen Kleener 3 cans 17c

QUALITY MEATS

Fresh Sweet Cream Land O' Lakes BUTTER 45c/lb.

Fresh Dressed Frying Chicken or BROILERS 38c/lb.

Canadian BACON BY THE PIECE 49c/lb.

Baby Beef LIVER 34c/lb.

Fancy Snow White CAULIFLOWER 15c/head

Well Bleached and Crispy CELERY HEARTS 12c/bt.

Lochmoor Market

Phone Niagara 4413

QUALITY MEATS * FRESH FRUITS AND VEGETABLES * BEER * WINE

First Aid, Motor Corps, Drivers Test and Motor Mechanics and Home Nursing

Comprise Medical Unit

Severely prominent physicians and surgeons with ten emergency nurses comprise the Medical Unit. The Village First Aid Station will have its first official inspection.

There will be a vivid demonstration of first aid to an emergency with an exhibition of pumping pressure with all hose lines in service. The Village's 41 Air Raid Wardens will figure prominently in this feature of the inspection.

As a visual demonstration of how it figures in Civilian Defense, the Village Red Cross Mobile Canteen Unit will dispense refreshments.

This will be the first review and inspection of this character, demonstrating the civilian's part in defense to be put on by any of the Grosse Pointe municipalities.

The Committee

The committee in charge of the whole program and general arrangements is made up of the following: C. A. Campbell, village president; O. C. Ingalls, Chief of Police; William R. Hamilton, chairman, and Mrs. E. J. Elroy O. Jones, vice chairman of Women's Activities; Dr. Clifford E. Lawson, in charge of Medical Service; Sherwood Reeske, Chief Air Raid Warden; and George E. Elworthy, Coordinator, Grosse Pointe Area Council of Defense.

Schools

(Continued from Page 1)

during the summer by the completion of the 12-room addition. Almost 100 pupils are enrolled. This is the largest elementary school in Grosse Pointe. The usually large number of pupils and teachers of this school has necessitated the appointment of Miss Clara Gustafson as first assistant teacher. Due to the absence of Miss Ethel Tucker, principal of the Mason School, from the city for the first two weeks of the opening school, Miss Gustafson has been ap-

pointed acting principal until Miss Tucker returns.

At the High School the combined enrollment of the High School grades and of Brownell Junior High is rapidly approaching 500. It will also tend to strengthen our physical education of our youth for the rigorous demands of war.

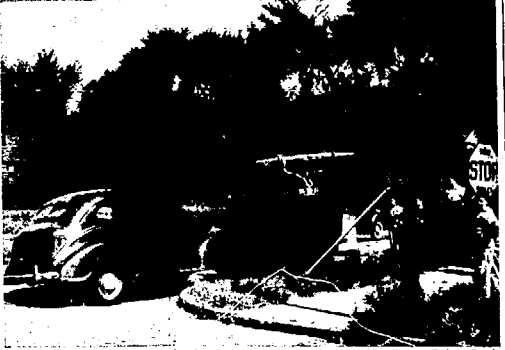
The improvement of our guidance services, with the appointment of Mr. Mann, will mean the challenge of a new school year, but our schools are accepting even more fully than ever before the challenge of a new school year, helping youth avoid needless loss of time and effort in finding his

Man Is Counselor

To provide guidance for youth of Grosse Pointe who complete or leave school to enter industry, military or civilian war services, William Mann has been appointed Field Counselor in Guidance. Mr. Mann will act in this capacity for students of both the Grosse Pointe High School and of Ferris Junior High School. It will be his duty to see that young people state time and mistakes in making the best transition from school to work, of military service, or further education.

"While these changes of our staff have been influenced somewhat by the war," said Mr. Mann, "they are, nevertheless, in line with sound school policy for a rapidly which is growing as quickly as ours. The strengthening of our instructional service in Mrs. Cove's appointment is consistent with the demands of a more exacting curriculum and a larger teaching staff of an unusually large number of new teachers."

Drunk Driving Caused This



One more smash-up caused by drunk driving was put down in the Grosse Pointe Park Police records Saturday when these Buick and Plymouth sedans cracked up at the corner of Whittier and Charlevoix at 12:14 p. m. Rueben Fielder, of 687 Flamer road, was hit while driving east on Charlevoix in his Buick sedan, by Ernest S. Dunn, 18886 Flax street, Detroit. Mr. Fielder, who was driving alone, was taken to Cottage Hospital with a badly bruised back, and Mr. Dunn was locked up and held, and given a court ticket for drunk driving. He was released Saturday evening on a cash bond of \$75. In Police court yesterday morning the case was remanded by Judge Victor H. DeBakee until September 16, at 8:30 A. M. for the presence of essential witnesses.

partially relieves Forrest Geary to meet the severe demands for our adult education program due to training of war production workers and other defense training classes. It will also tend to strengthen our physical education of our youth for the rigorous demands of war.

The improvement of our guidance services, with the appointment of Mr. Mann, will mean the challenge of a new school year, but our schools are accepting even more fully than ever before the challenge of a new school year, helping youth avoid needless loss of time and effort in finding his

You May Start to Shop Now of the Grosse Pointe Hardware for Those Gifts Which Will Insure

Another

CHRISTMAS

IN THE OLD-TIME AMERICAN SPIRIT

Hardware and Homeware Gifts are Gifts That Serve! Stocks are Extremely Limited

Give Your Lawn FIRST AID!

with Scott's Lawn Seed and Turf Builder

Weeds, insects and scorching sun plague lawns all summer. Help yours regain health and sparkling color by feeding with Turf Builder (grassseed) and sowing new growing Scott's Seed.

For Sunny Lawns—5 lbs. \$2.95
1 lb. 65c—3 lbs. \$1.85—10 lbs. \$5.75

TURF BUILDER—One pound of this complete grassfood puts new life and color in 100 sq. ft. of grass
10 lbs.—\$1.25 50 lbs.—\$5.75
25 lbs.—2.25 100 lbs.—6.00

Jars, Kettles, etc. for Canning Your Victory Harvest!

GROSSE POINTE HARDWARE

16915 E. Jefferson Near Notre Dame Niagara 4420

There will always be SMARTNESS at Whaling's!

STYLE isn't bought by the bolt... fashion isn't measured by the yard. It's the ability a style organization puts into its fabrics and needlework that gives you the sense and "feel" of correctness. There has been no rattoning of good taste at Whaling's this Fall... no limitations in style-ability. Our new showings, ready now, reflect the truth of this assertion.

Ready-to-put-on Suits, from \$40
Whaling Custom Imperial Suits, from \$20

WHALING'S

MEN'S WEAR • 617 WOODWARD

MEMO! Whaling's Will Open Monday Eve.

Park Beach

(Continued from Page 1)

citizens be allowed to enjoy the use of the beach to the utmost, it has been necessary to deny park privileges to a number of sponsored individuals who were not bona fide guests. Citizens are urged to cooperate in reserving park facilities for park residents by not sponsoring any but bona fide guests.

Although the swimming season is officially closed, the recreation park is not. During the fall and winter months, the clubhouse is available to the citizens without charge. Many dances and parties are held there each year. Just make arrangements 10 days or two weeks in advance and the place is yours.

And then—ice skating—but that's another story.

Are You Assured of Your Fuel Supply?

Over 18 years of dependable service to Grosse Pointers should merit your present and future orders during the Emergency for:

"THAT GOOD COAL"

Authorized Distributors for "America's Highest Value Fuels"

- Semet-Solray or Ford Coke • Grenadier Stoker Coal
- Original Pocahontas • Olga or Koppers Stoker Coal
- Lehigh Valley Anthracite • Cannon Coal—Fireplace Wood
- Sunoco Fuel Oil

BAKER-WHILDIN COAL CO.

PLAZA 8500 We Appreciate Your Orders PLAZA 8500

CURTAINS

BEAUTIFULLY LAUNDERED

BY

La Measure Bros.

Since 1897, Detroit's Leading Laundry Dry Cleaning and Rug Cleaning Plant

LAFAYETTE 2200

WEEK END SPECIALS

Go Back to School Ready

SCHOOL TABLETS

3 for 10¢

You'll want to get these well-known school tablets in the 2, 3, 5, 10, 20, 50, 100 and 200 pack. Durable binding with card-board backing. Of quality paper, they will last. Available at all schools. Ask your dealer to stock up on these school year to come.

JUMBO DICTIONARY

GIANT ILLUSTRATED 98c

LEAD PENCILS

WITH ERASERS 12 for 23c

STENO NOTE BOOK

10c VALUE 7c

EVERSHARP PENCIL

10c VALUE 6c

HOLD ALL PASTE

10c VALUE 8c

PENCIL COMPASS

10c VALUE 7c

LOOSE LEAF BINDER

10c VALUE 7c

LOOSE LEAF FILLER

5c VALUE 4c

COMPOSITION BOOK

5c VALUE 4c

COMPOSITION BOOK

5c VALUE 7c

10c GRAYOLAS

EIGHT COLORS 7c

RED AND BLUE PENCIL

DOUBLE TIP 4c

PENCIL SHARPENER

75c VALUE 59c

GONKLIN PEN and PENCIL

98c

ATLAS SHOE POLISH

3c VALUE 3c

SANDWICH BAGS

PACKAGE OF 40 8c

WAX PAPER

45-FOOT ROLL 6c

LARGE SWAN SOAP

2 for 19c

LYON'S TOOTH POWDER

50c SIZE 26c

QUART GRAPE JUICE

33c

Gunningham's

DRUG STORES

KERCHEVAL AT NOTRE DAME

Remember to take your change in War Stamps!

TABER FURNITURE CO's

SALE

Edward F. and J. Harold Taber — Americans Since 1633

Drive To Our Door and Park Comfortably

159 West Jefferson Ave.

Store Open 9 A. M. to 6 P. M.
Evenings By Appointment

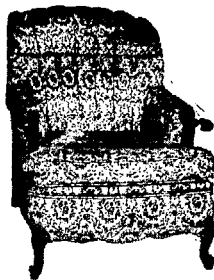
Phone Cadillac 1616



Original Oil Paintings, Etchings, Imported Prints and Mirrors; we offer over one thousand subjects to select from



PAIR MATCHED ROSE QUARTZ LAMPS
Value \$600 Now \$350
Floor and Table Lamps \$5.00 and up, all greatly reduced



LOUNGE CHAIRS AS SHOWN \$69.50
LOUNGE CHAIRS FROM \$39.50 UP



Over 100 Occasional Chairs in Mahogany, Walnut and Oak. Extra fine coverings from \$15.50 up.

WE HAVE BOUGHT the Five-Story Building at 25 West Jefferson Ave. which will be our new business home after Sept. 20



FOR THE NEXT TWO WEEKS

Every Piece of Bedroom Furniture Dining Room Furniture Breakfast Room Furniture Living Room Furniture Is Offered at **DRASTIC REDUCTIONS**

TERMS IF DESIRED

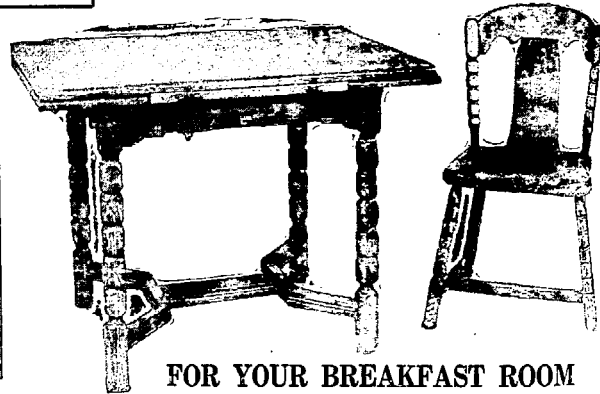


Quality at a Price!

Fine Furniture from the world-famous shops of Robert W. Irwin Co.; Johnson, Handley, Johnson; Doten, Dunton, Wierenga and Brumels Kittinger, Peter Brill and others



Many Beautiful Vases, Bronze and Marble Statuary and other objects of art

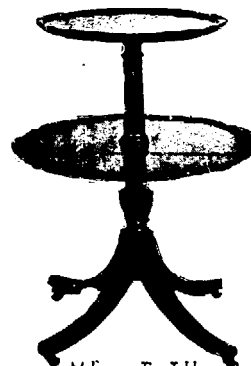


FOR YOUR BREAKFAST ROOM There is quality and everlasting beauty in the ruggedness of Oak

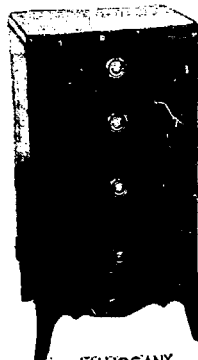


LOVE SEAT Solid Mahogany—Beautiful Covering Was \$230 Now \$129.50

Visit our Second floor Gallery for the unusuals in furnishings



Mahogany Tier Table \$29.50 Hundreds of Tables for all occasions from \$9.50 up.



MAHOGANY RECORD CABINET \$17.50

